

# HAM RAG

Affiliated with ARRL

NET meets each Monday at 9:00 P.M. local time on 28.7 megahertz



DECEMBER 1971

MERRY CHRISTMAS!

WITH ALL OF THE EVENTS OF THE MONTH THIS IS GOING TO BE A RATHER SKIMPY ISSUE OF THE HAM RAG, BUT I KNOW YOU'RE ALL BUSY TOO AND WILL UNDERSTAND.

AS I WRITE THIS, OUR MESSAGE CENTER AND DISPLAY IS IN FULL SWING AT THE COLONIAL VILLAGE MALL. ALREADY WE HAVE HANDLED NEARLY 100 MESSAGES TO SERVICEMEN, MOVING MOST OF THE TRAFFIC OVER THE MARS NETS. LAST SATURDAY AND SUNDAY REPRESENTATIVES FROM ARMY MARS AT FORT SHERIDAN ASSISTED US AT THE BOOTH, AND HELPED HANDLE THE TRAFFIC DIRECTLY INTO THE MARS NETS. ON WEEKDAYS WE HAVE A SKED WITH W9USA AT FORT SHERIDAN ON 40 METERS TO RELAY TRAFFIC. K9QYY IS ALSO PASSING TRAFFIC INTO NAVY MARS NETS EACH EVENING. WE WERE ALL VERY PLEASED WITH THE RESPONSES WE RECEIVED WHEN CALLING MEMBERS TO ASK FOR ASSISTANCE IN MANNING THE BOOTH. WHAT WE THOUGHT WOULD BE A DIFFICULT TASK (GETTING ENOUGH PEOPLE TO MAN THE BOOTH) TURNED OUT TO BE SIMPLE, THANKS TO YOU FELLOWS. SOME OF YOU WHO WERE NOT CALLED ABOUT MANNING THE BOOTH, PLEASE DO NOT FEEL THAT WE LEFT YOU OUT ON PURPOSE. BY THE TIME WE GOT JUST PART WAY DOWN THE LIST WE HAD MOST SPACES ON OUR CHARTS FILLED. THE RESPONSE WAS THAT GOOD!! SO AGAIN, THANKS. BY THE WAY, WE'VE HAD FREQUENT BLURBS IN THE NEWSPAPER ON THE PROJECT.

CHRISTMAS IS ALWAYS A HAPPY TIME OF THE YEAR, AND WE INTEND TO MAKE IT HAPPIER AT THE RARA CHRISTMAS PARTY, I'M SURE I DON'T HAVE TO REMIND YOU NOT TO FORGET THE DATE... DECEMBER 14TH AT THE COACHMAN INN. SOME INQUIRIES AS TO WHY WE CHOSE A TUESDAY NIGHT. WELL, MANY RESTAURANTS DON'T LIKE PRIVATE PARTIES ON WEEKENDS (UNLESS THEY'RE REALLY BIGGIES) AND ALSO WHEN WE MADE PLANS BACK IN OCTOBER, MANY DATES WERE ALREADY TAKEN. SO, THAT'S THE WAY IT GOES. IT'S LOOKS LIKE ABOUT 70 MEMBERS AND GUESTS WILL BE THERE, AND FOR THOSE WHO CAN'T, THERE'S ALWAYS NEXT YEAR.

THERE IS SOME RUMBLINGS ABOUT RAISING DUES NEXT YEAR, AND I MUST REPORT I AM NOT AGAINST IT. THE CRISTMAS PARTY IS COSTING THE CLUB \$4.34 PER MEMBER ATTENDING. THAT'S A PRETTY GOOD RETURN ON YOUR INVESTMENT OF \$3.00 AT THE BEGINNING OF THE YEAR. I STILL HAVEN'T FIGURED OUT HOW WE DID IT!!

DE K9PAK

## ROCKFORD GOES RTTY

THE LAST RARA MEETING HAD A TALK AND DEMONSTRATION ON RTTY PRESENTED BY W9BQC. THANKS DON FOR A REAL GOOD PROGRAM, AND I'M ALL SURE WE AGREE THAT WE WANT DON BACK AGAIN SOON TO GET INTO IT A LITTLE DEEPER. ANYWAY, FOLLOWING THE MEETING THERE HAS BEEN A LOT OF INTEREST IN TELETYPE. K9UCM, WB9BHY, WA9NMK (BELOIT), K9PAK, AND W9BQC HAVE ALL ACQUIRED MACHINES. WB9BHY, WA9BWK, AND K9PZZ ARE ALREADY IN OPERATION ON SIX METER AM, AFSK, AROUND 50.7 TO 50.9MHZ. THIS IS A GOOD IDEA. WITH SIX METER AM ACTIVITY AT A LOW EBB, MANY RIGS ARE AVAILABLE ON THE USED MARKET AT LOW PRICES. BY USING A FIXED FREQUENCY IT IS POSSIBLE TO USE AUTOSTART. THAT IS WHERE YOUR MACHINE COMES ON AUTOMATICALLY WHEN A TELETYPE SIGNAL COMES ON FREQ., COPIES THE MESSAGE, AND THEN SHUTS OFF. SOME SOPHISTICATED MODIFICATIONS OF THIS INCLUDES A UNIT THAT RECOGNIZES YOUR OWN CALL, AND COPIES TRAFFIC ONLY FOR YOU. THIS TYPE OF OPERATION IS GREAT FOR NETS.

I THINK THAT THERE ARE MORE OF YOU OUT THERE WHO WOULD LIKE TO TRY RTTY BUT ARE AFRAID OF THE UNKNOWN OR DON'T WANT TO SPEND MORE MONEY ON SOMETHING YOU MAY NOT USE. SO, WE HAVE A GOOD OFFER TO PRESENT. IN MOST LARGE CITIES THERE IS A TELETYPE CLUB. MOST HAMS OBTAIN MACHINES THRU A CLUB, WHO HAVE PURCHASED A LARGE QUANTITY OF MACHINES FROM A COMMERCIAL USER. WE, AS A CLUB, HAVE NEGOTIATED TO GET MACHINES TOO, NOT TO BE OUTDONE BY OUR SUBURBAN NEIGHBORS TO THE EAST. SO THE DEAL IS THIS. MACHINES ARE MODEL 15'S. THEY ARE COMPLETE IN OPERATING CONDITION ON 60 W.P.M, THE STANDARD HAM RTTY SPEED. THEY ARE COMPLETE PAGE PRINTERS WITH KEYBOARDS, READY TO SEND AND RECEIVE TELETYPE. PRICE IS \$50 EACH, CASH AND CARRY, FROM WAREHOUSE IN MILWAUKEE. WE CAN PICK FROM BEST MACHINES IN WAREHOUSE. PLANS ARE TO GET A TRAILER OR TRUCK LINED UP AND GO AFTER THEM SOME SATURDAY. SO IF YOU ARE AT ALL INTERESTED IN RTTY HERE IS A CHANCE TO GET A MACHINE CHEAP. SUPPOSE YOU DECIDE YOU ARE NOT INTERESTED LATER. WELL, YOU CAN TAKE THE MACHINE TO THE HAMFEST AND EASILY GET YOUR MONEY BACK WITH A PROFIT TO BOOT. THERE ARE NOT MANY PIECES OF HAM GEAR THAT HOLDS A VALUE BETTER THAN A TELETYPE MACHINE. AND, A MODEL 15 IS BUILT LIKE A TANK, AND NEEDS LITTLE OR NO ATTENTION OTHER THAN OIL EVERY 5000 MILES. FOR MORE INFO ON TELETYPE, SEE ANY OF THE ARTICLES ON GETTING STARTED ON RTTY IN HAM MAGAZINES THE PAST FEW YEARS. ONE ADDED THOUGHT... MANY OF THE BIG A.M. TRANSMITTERS OF DAYS PAST PERFORM WELL ON LOW BAND RTTY, FOR EXAMPLE SOME OF THE JOHNSON VIKING GEAR, AND IS AVAILABLE FOR PENNIES COMPARED TO ORIGINAL PRICES. RTTY IS LIKE THE F.M. BUG... ONCE YOU TRY IT, YOU CAN'T SEEM TO LEAVE IT ALONE.

## WANTED: REPORTERS FOR THE HAM RAG

HAD A WELCOME CALL FROM RALPH, WN9HHH, THE OTHER EVENING. SEEMS THAT RALPH THINKS THE NOVICE IS BEING SHORTCHANGED IN HAM RAG SO HE IS GOING TO DO SOMETHING ABOUT IT. HE IS GOING TO WRITE A NOVICE/ BEGINNERS COLUMN EACH MONTH FOR THE PAPER. WE COULD USE SOME OTHER SPECIALITY COLUMNS TOO, SO IF YOU HAVE SOMETHING FOR THE PAPER, PLEASE GET IT TO ME (K9PAK) BY THE FIRST OF THE MONTH.

## THE GRAPE VINE

CONGRATULATIONS ARE IN ORDER TO: RAY LENBURG, WB9ILH, WHO STARTS OUT IN HAM RADIO WITH A NEW GENERAL CLASS TICKET; JOHN WACKER AND MIKE SOUHARDA WHO HAVE PASSED NOVICE TESTS; AND JIM HOISINGTON (EX-WN9CFG) WHO PASSED THE ADVANCED CLASS. BY THE WAY, ASK JIM TO TELL YOU THE STORY ABOUT HOW THE FCC GAVE HIM THE EXTRA CLASS TEST BY MISTAKE WHEN HE WENT IN TO TAKE THE GENERAL, AND HE ALMOST PASSED IT. ANYWAY, JIM THOUGHT IT WAS SO EASY, HE JUMPED TO THE ADVANCED THIS TIME.

ANYBODY SEE THE FIELD DAY RESULTS? RARA TOOK 3RD IN THE NATION IN OUR CLASS. THANKS AGAIN TO WTS AND LVT FOR THEIR WORK TO GET US THERE, NEW HAM IN TOWN... K9PGW, CLAUDE, (OH, NO, NOT ANOTHER CLAUDE!!) WHO IS COMMUTING HERE FROM CHICAGO. HE WILL BE MAKING HIS RESIDENCE HERE AFTER JAN. 1ST, AND IS PART OWNER OF GINDERS HOSPITAL SUPPLY. HE IS ON 2 METER FM FROM THE MOBILE. DAVE, WB9EEH, HAS THE REPEATER OPERATIONAL FROM HIS HOME ON A TEMPORARY BASIS, 146.46 TO .88. TALKED TO W9HPG, PHIL HALLER, OUR ARRL DIRECTOR VIA LANDLINE THE OTHER DAY. HE HAS ASSURED US THE USE OF THE HAM'S WIDE WORLD FILM FOR THE JAN. 14TH EXTRAVAGANZA. PHIL HAS BEEN UNDER THE WEATHER WITH GALL STONE TROUBLE AND A BUM ANKLE. SURE HOPE HE IMPROVES IN TIME TO GET IN ON THESE EARLY WINTER COLDS THAT SEEM TO BE GOING AROUND, HI. OUR SICK CALL THIS MONTH LISTS BUD, WB9CHU, WHO IS LAID UP WITH A FRACTURED ARM. HE IS REPORTEDLY GOING INTO THE HOSPITAL TO HAVE A PIN INSERTED. SOMEBODY TOLD BUD THAT A PIN IS JUST THE RIGHT LENGTH FOR AN ANTENNA ON 1215 MHZ. SO BUD WANTS THE DOC TO ATTACH A PIECE OF COAX TO IT, FOR PORTABLE OPERATION. ACCORDING TO GOOD RUMOR, ART COLLINS HAS BEEN REMOVED AS PREZ. OF COLLINS RADIO. WORD HAS IT THAT COLLINS BUILT HAM GEAR ONLY BECAUSE ART GOT HIS START IN HAM RADIO. DRAW YOUR OWN CONCLUSIONS. HEATH APPARENTLY HAS A NEW SOLID STATE TRANSCEIVER FOR SSB READY FOR RELEASE NEXT YEAR, SUPPOSED TO BE REALLY SOMETHING. MANY MANUFACTURER'S WHO IMPORT JAP GEAR FOR RELABELING HAVE BEEN HURT BY DOCK STRIKES. SOME INCREASE IN 2 METER AM ACTIVITY HAS BEEN REPORTED. USUAL OPERATING FREQ IS 145.30. ALSO A GROUP IS TRYING TO GET TONE CW NET STARTED ON 2 METERS. SEEMS LIKE A NOVICE IS ELIGIBLE FOR THIS OPERATION (A2). WOULD MAKE GOOD CODE PRACTICE.

## CONTEST CORNER

LOTS OF RESULTS TO REPORT. (SEE FIELD DAY RESULTS ABOVE.) WE HAD 8 STATIONS ENTERED IN THE GQ WORLDWIDE DX CONTEST. FINAL CLUB AGGREGATE SCORES SHOULD BE BETTER THAN 1,000,000 POINTS ON FONE AND 1,300,000 ON CW/FONE COMBINED. PARTICIPATING WERE W9AXD (CLUE STATION), K9WTS, W9LVT, WA9WMI, WB9ETH, K9DDL, & WA9UCE. THEN ON THE ARRL SWEEPSTAKES WE ARE HAPPY TO REPORT THAT BOTH LVT AND WTS SCORED CLEAN SWEEPS... WORKED ALL 75 ARRL SECTIONS. NO FINAL SCORES YET. OPERATING THIS CONTEST WERE LVT, UCE, WTS, ETH, ALONG WITH WB9CHU, WB9HGZ, AND K9UIY. ABOUT THE ONLY CONTEST LEFT THIS YEAR IS THE 160 METER CONTEST, DEC 11TH AND 12. OH, YES, STRAIGHT KEY NITE IS NEW YEARS EVE.

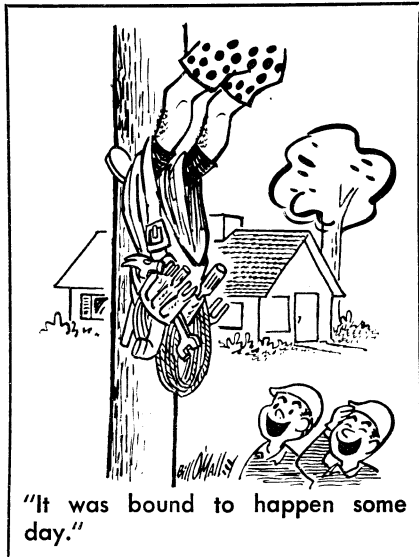
TRADING POST

SELL: DRAKE 2B RECEIVER, HEATH Q-MULTIPLIER, HW-32 FOR  
20 METER SSB WITH BOTH AC AND DC SUPPLIES,  
CALL JIM, WB9ETH, 877-1517.

SELL: MOBILINE SIX TRANSCEIVER FOR 6 METERS, INCLUDES AC &  
DC SUPPLIES, HALO AND BUMBER MOUNT, \$35 FOR ALL,  
CALL LEO, W9CVM, 968-2837.

SELL: EICO 720 CW TRANSMITTER, RUNS 90 WATTS MAX, GOOD  
FOR NOVICE, ALSO 15 WATT AMECO CW TRANSMITTER,  
CALL BEN, WN9HRJ, 962-6477.

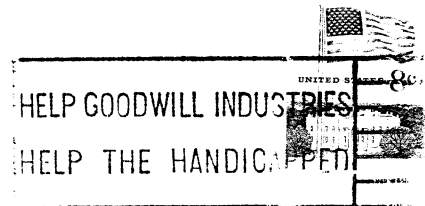
SELL: SWAN 350C WITH AC SUPPLY, RUNS 520 WATTS PEP,  
TRANSCIVE ON ALL BANDS, CALL, STEVE, K9LLI, 398-1876.



LATE NEWS

MIKE SOUHARDA RECEIVED HIS NOVICE CALL, WN910G. THE C.D. TOWER IS FINALLY GOING UP, SHOULD BE 250' BY TIME YOU READ THIS. IT IS TO BE PART OF 2 METER REPEATERS. W9DDL REPORTS THAT "HAM'S WIDE WORLD" WILL BE SHOWN ON MADISON CHANNEL 21 TV, 6:30 PM ON DECEMBER 31ST. TRAFFIC COUNT FROM MESSAGE BOOTH AT COL. VILLAGE IS OVER 200 AS OF WEDNESDAY, W9MAP WAS ON DUTY AT MALL TUESDAY AND BECAME A TV STAR WHEN CHANNEL 17 TOOK PICTURES OF BOOTH AND INTERVIEWED ERNIE.

ROCKFORD AMATEUR RADIO ASSN.  
C/O DAVE BARQUIST, K9PAK  
5845 DAFRED DRIVE  
ROCKFORD, ILL. 61107



FIRST CLASS MAIL

WB9HCZ  
Paul Dean  
317 Shaw St  
Rockford IL 61108